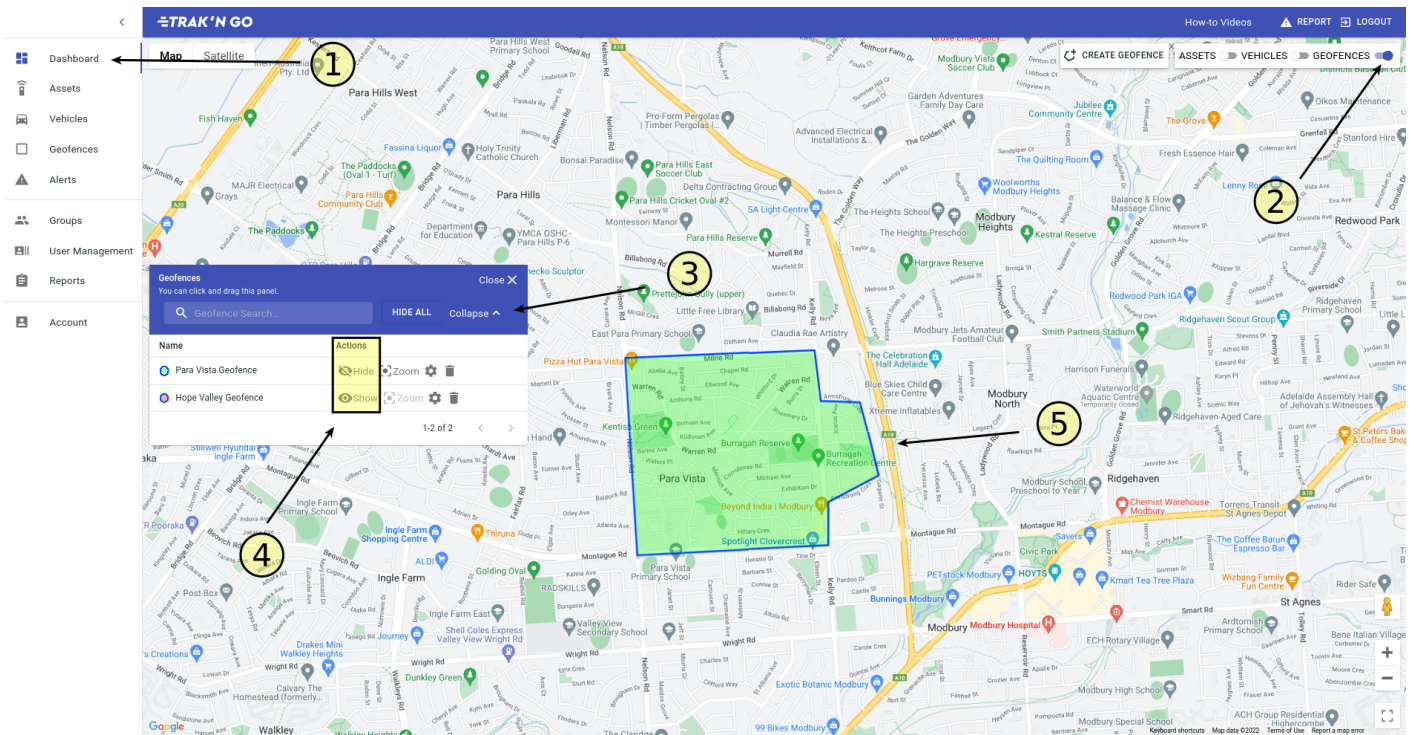


How to view a geofence on the map?



1. Make sure you are on the dashboard page.
2. On the top right of the screen, make sure the toggle for GEOFENCES is on.
3. You will see a geofence panel, that you can open by clicking the Expand button.
4. Click 'Show' Button for the geofence that you want to view on the map.
5. It will appear on the map.

Revision #2

Created 5 August 2022 05:41:14 by Jatin Kumar

Updated 10 August 2022 06:15:46 by Jatin Kumar