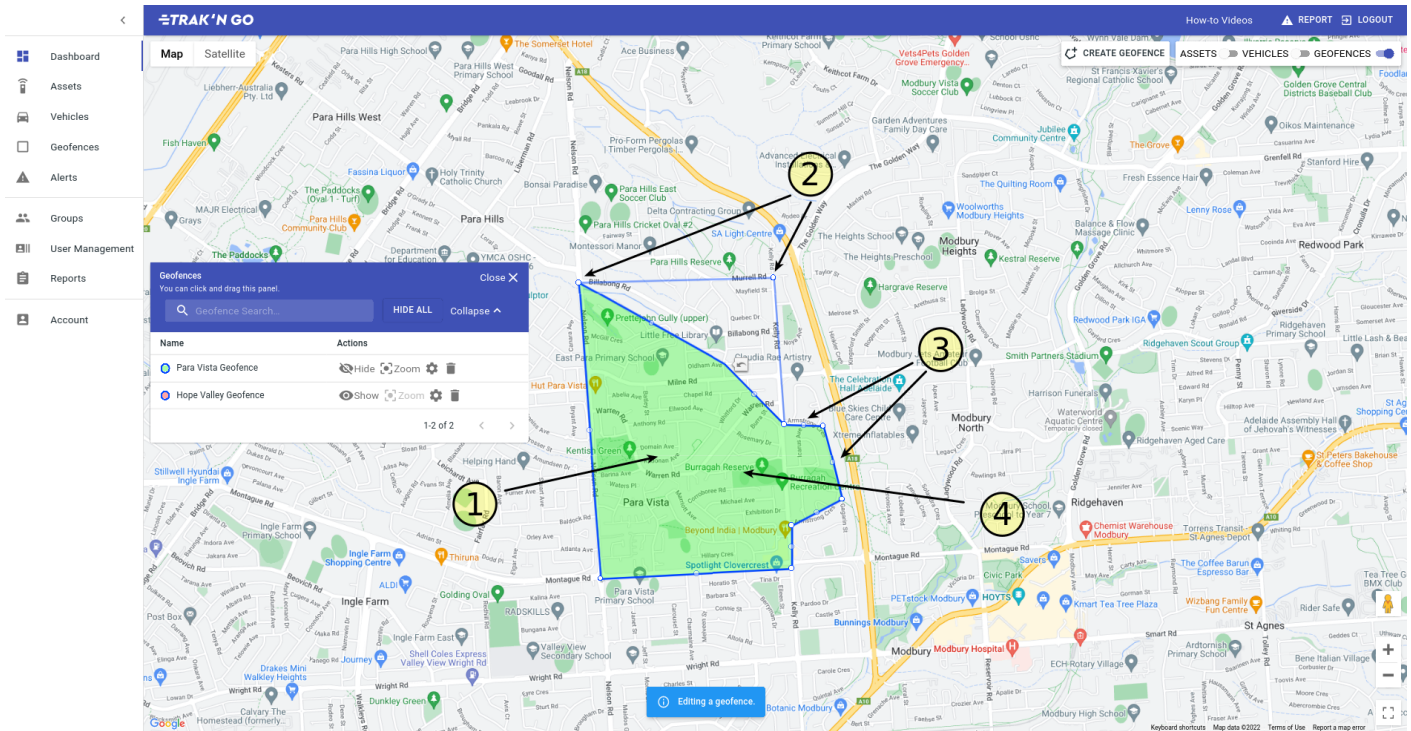


# How to edit a geofence?

Follow this guide to view the geofence first - [How to view a geofence on the map?](#)



1. Click in the middle on the geofence. This will start the editing process.
2. You can click and drag on these points to change their position.
3. The points in the middle of an edge will allow you to create new points.
4. Once you are done editing, click back inside the geofence to save your changes.

Revision #3

Created 5 August 2022 05:41:22 by Jatin Kumar

Updated 10 August 2022 06:26:05 by Jatin Kumar