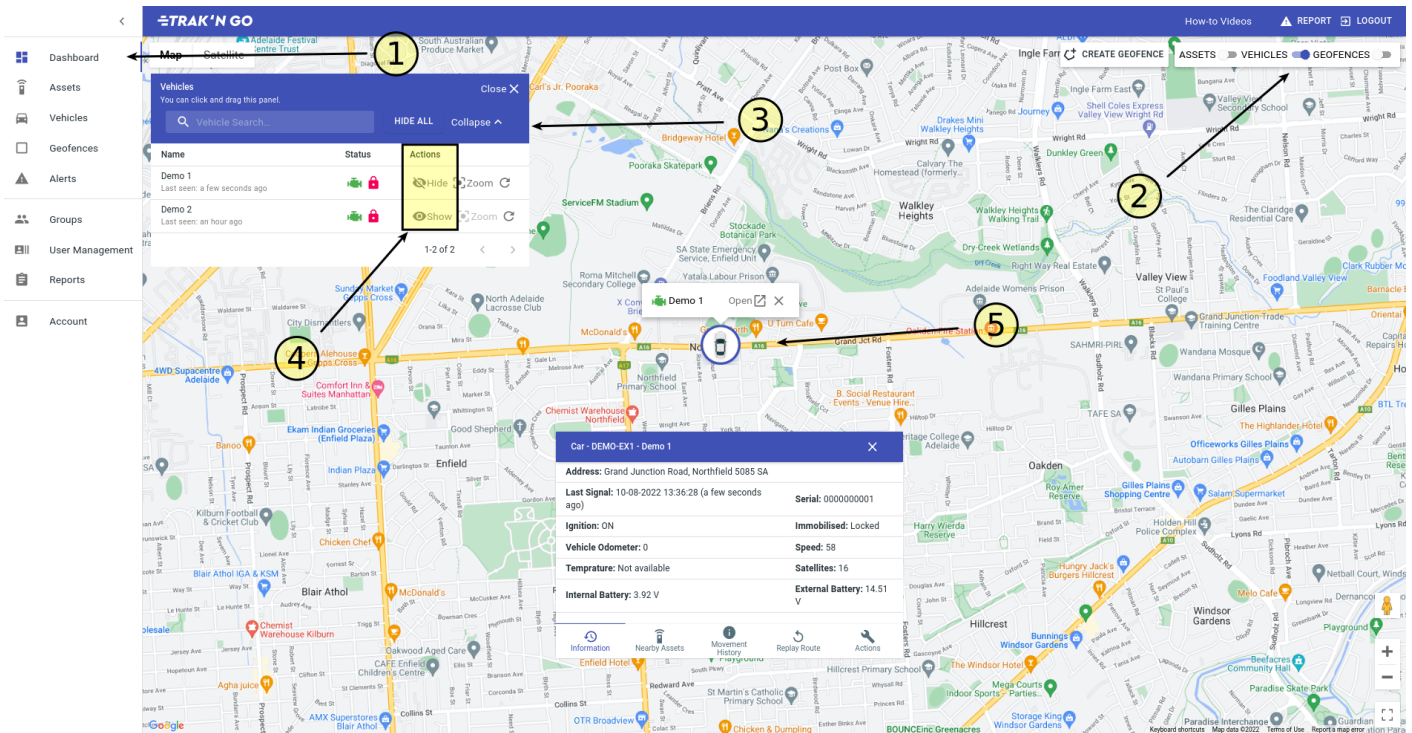


Dashboard

- [How to view a vehicle on the map?](#)
- [How to replay the route of a vehicle?](#)
- [How to export a replay route of a vehicle?](#)
- [How to Immobilise/mobilise or door lock/unlock a vehicle?](#)
- [How to see the movement history for a day?](#)
- [How to create a geofence?](#)
- [How to view a geofence on the map?](#)
- [How to edit a geofence?](#)
- [How to view an asset on the map?](#)

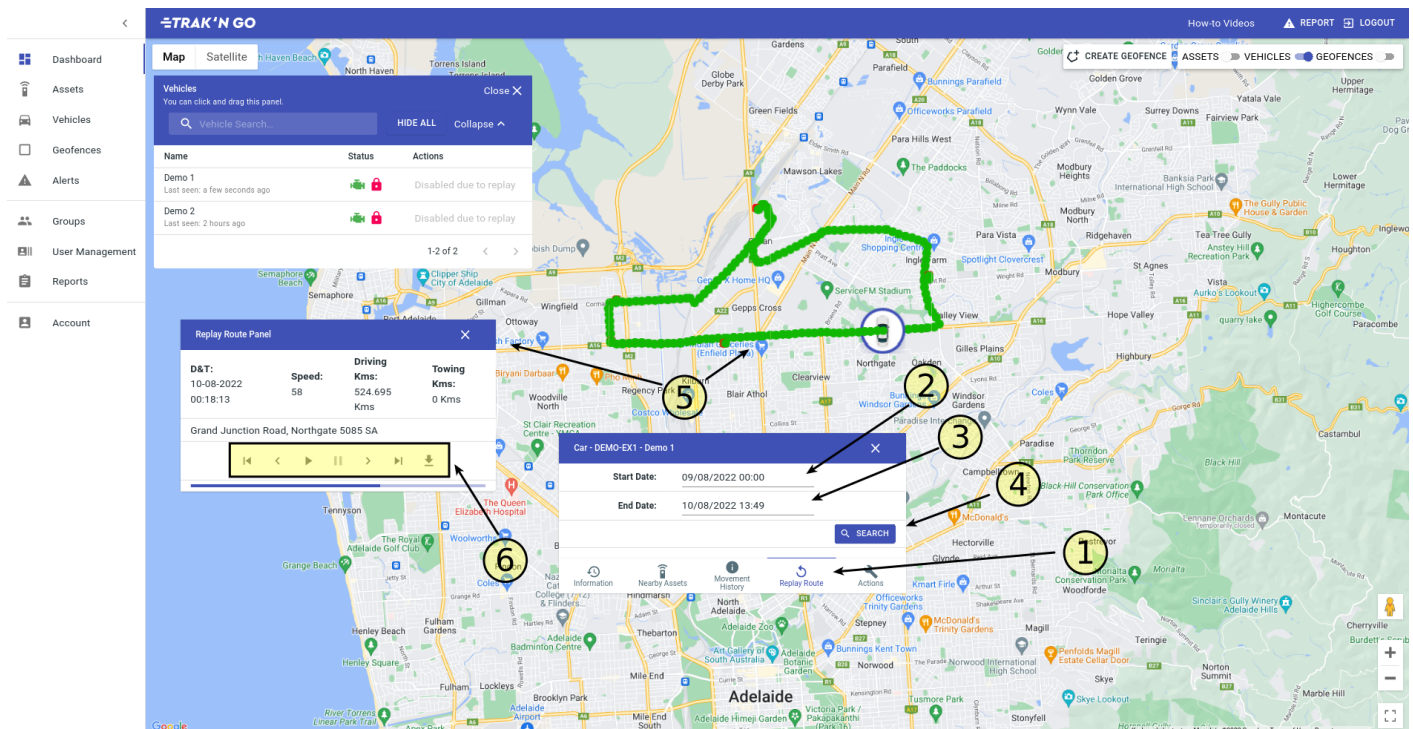
How to view a vehicle on the map?



1. Make sure you are on the dashboard page.
2. Top right on the page, make sure that toggle for VEHICLES is on.
3. You will see the vehicle panel. Click 'expand' to open the panel.
4. Click the Show button on the vehicle you want to see.
5. You will see the vehicle on the map.

How to replay the route of a vehicle?

Please follow this guide first - [How to view a vehicle on the map?](#)



1. Click the Replay route tab.
2. Enter the start date for the replay.
3. Enter the end date for the replay.
4. Click Search.
5. It will show the route of the replay on the map and it will bring up a replay route panel. The replay route panel will show you the date&time, speed and address of the current position in the replay. It will also show total driving and towing distance for the replay.
6. These are the controls for the replay. From left to right, there are: Jump to start, previous position, play replay, pause replay, next position, jump to last and export replay to a spreadsheet.



Once you click play, you will see the fast forward feature. In the middle, you will see the current play speed. You can fast forward or slow down the replay speed using the two

button.

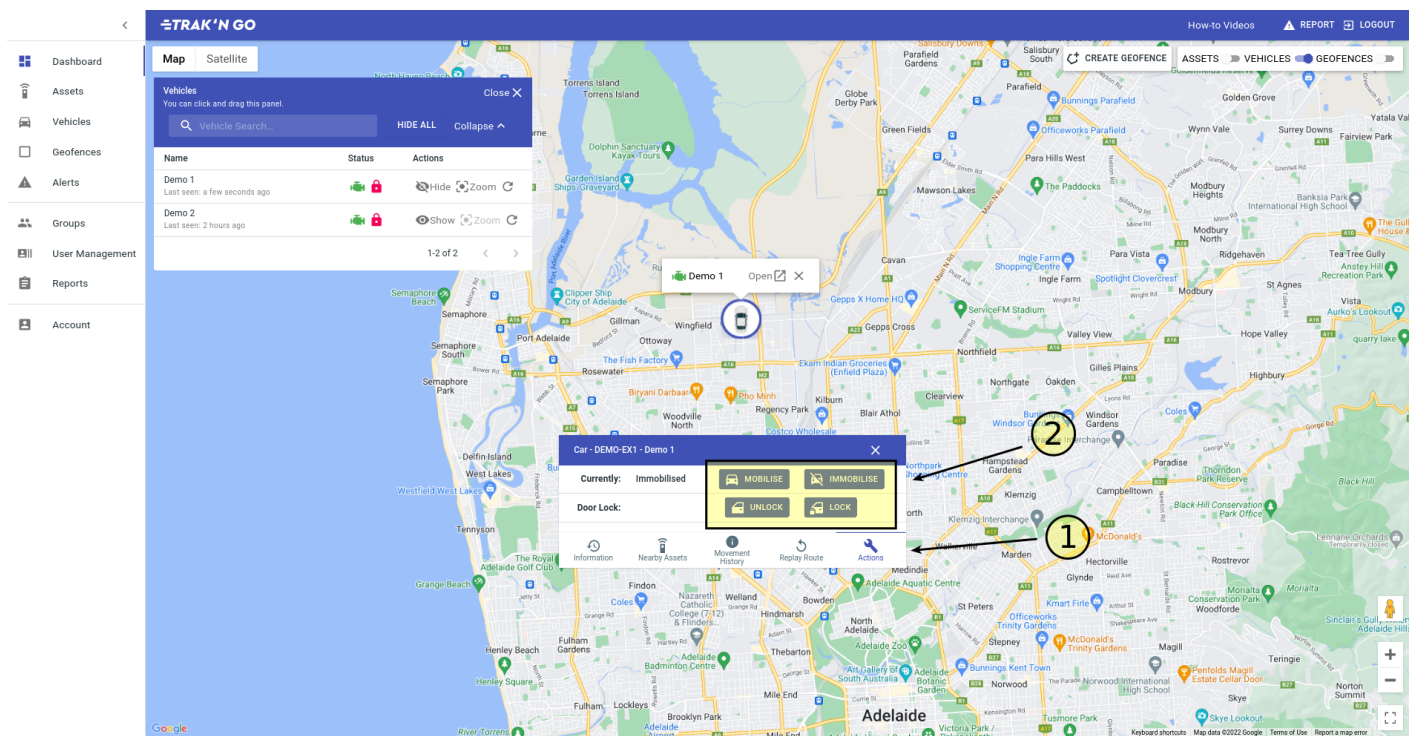
How to export a replay route of a vehicle?

Please see the following guide - [How to replay the route of a vehicle?](#)

How to Immobilise/mobilise or door lock/unlock a vehicle?

Please follow this guide first - [How to view a vehicle on the map?](#)

Note - This feature requires additional hardware to be installed in your vehicle.



1. Click on the Actions tab.
2. You will see four buttons. Click on the appropriate button for what you are after.

How to see the movement history for a day?

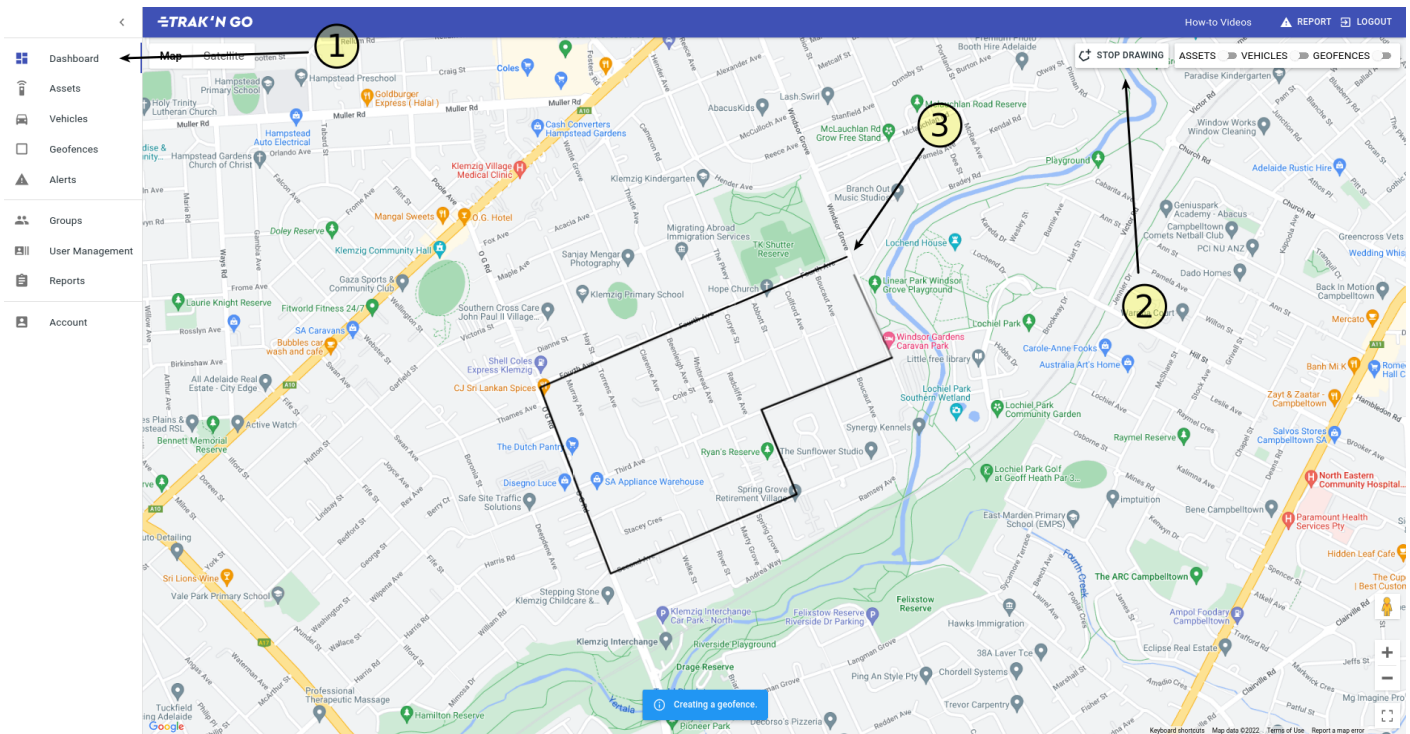
Please follow this guide first - [How to view a vehicle on the map?](#)

The screenshot shows the TRAK'N GO interface. On the left is a sidebar with navigation options: Dashboard, Assets, Vehicles, Geofences, Alerts, Groups, User Management, Reports, and Account. The main area is a map of Adelaide, Australia. A vehicle icon is selected on the map, and a pop-up window titled 'Car - DEMO-EX1 - Demo 1' is open. The pop-up window has a 'Pick a Date' field set to '10/08/2022' and a 'SEARCH' button. Below this, the movement history is displayed in a table format.

Activity	From	To	Start location	Stop location
Driving	From: Davis Street, Wingfield 5013 SA To: Onaping	10-08-2022 14:49:35	Start location on map	
Stopped	From: Davis Street, Wingfield 5013 SA To: Davis Street, Wingfield 5013 SA	10-08-2022 14:47:04	Start location on map	Stop location on map
Idle	From: Davis Street, Wingfield 5013 SA To: Davis Street, Wingfield 5013 SA	10-08-2022 14:46:04	Start location on map	Stop location on map

1. Click the Movement History tab.
2. Enter a date.
3. Click Search
4. It will bring up the movement history for that day.

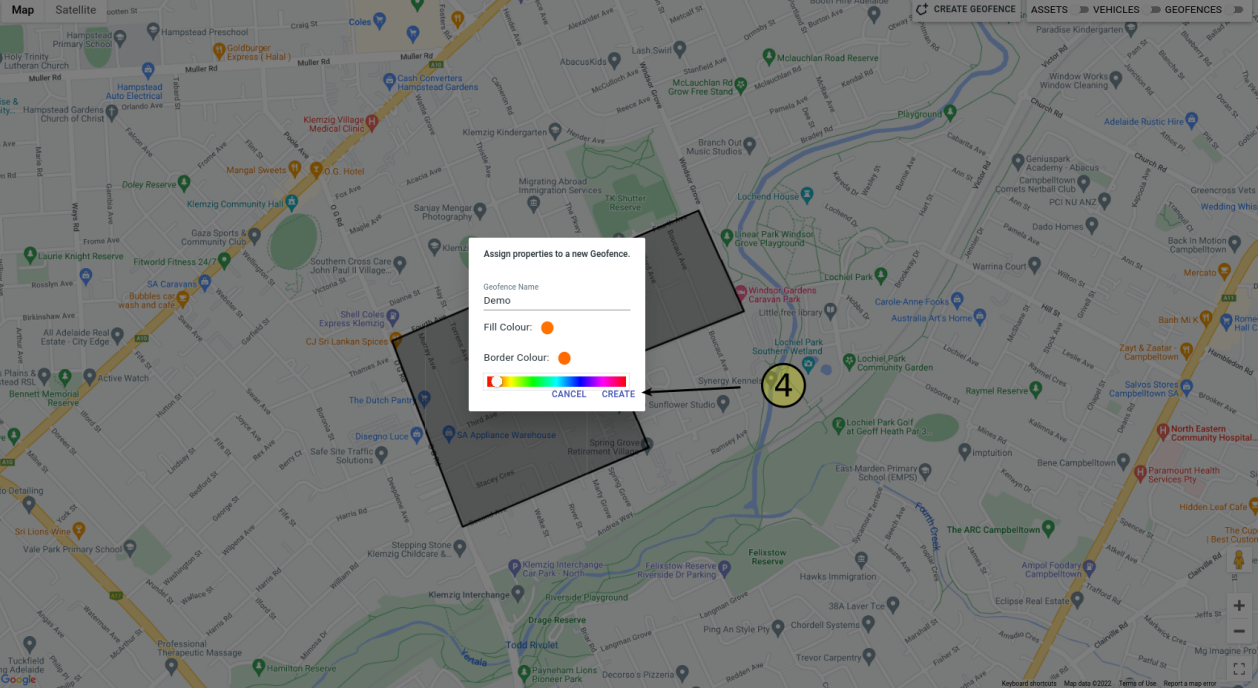
How to create a geofence?



1. Make sure you are on the Dashboard page.
2. Click the Create Geofence Button.
3. Now you can draw on the map using single mouse clicks (Don't click and drag).
Your last click must on the same point as your starting click. This will finish your geofence.
4. (See below) A dialog box will pop-up asking you for your geofence's name, fill colour and border colour.
Click CREATE to finalise the geofence.

Follow this guide if you want to see the geofence you have created - [How to view a geofence on the map?](#)

- Dashboard
- Assets
- Vehicles
- Geofences
- Alerts
- Groups
- User Management
- Reports
- Account



Assign properties to a new Geofence.

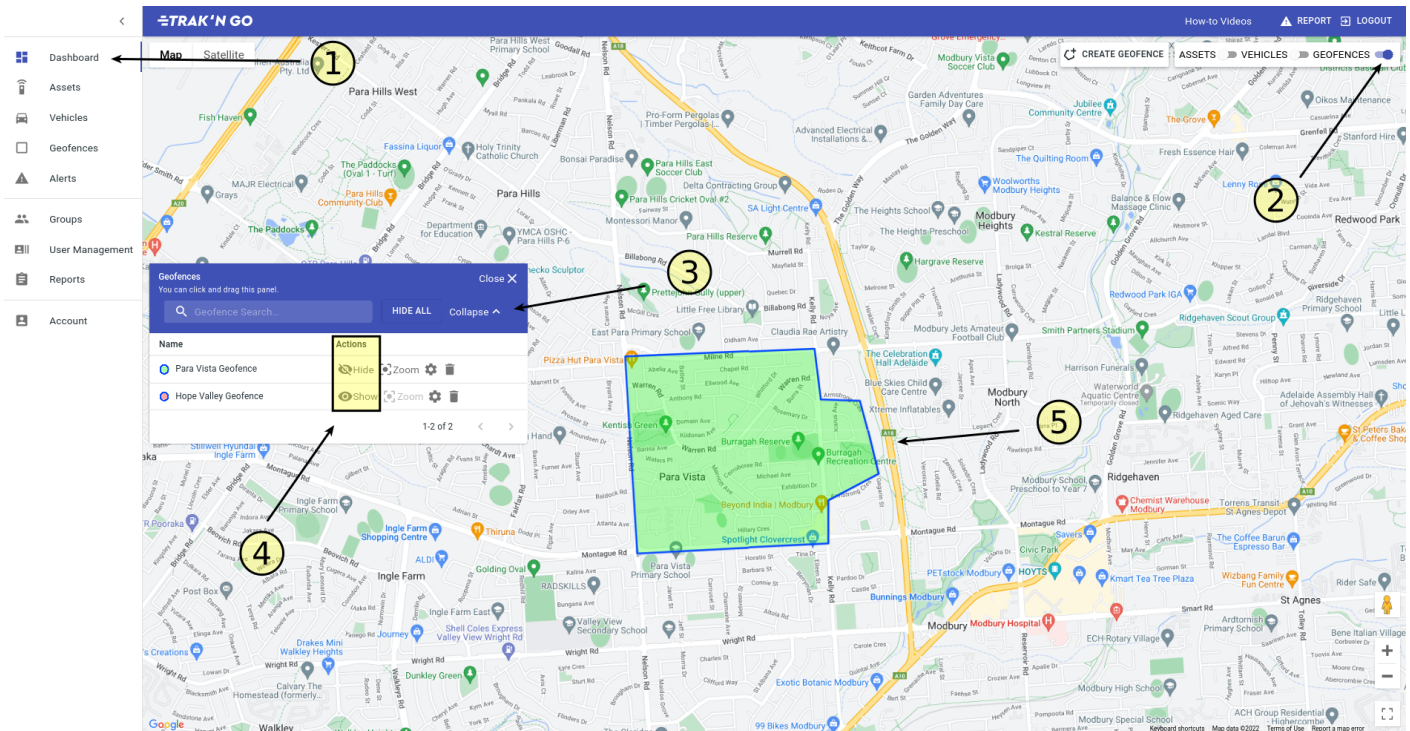
Geofence Name
Demo

Fill Colour: ●

Border Colour: ●

CANCEL CREATE

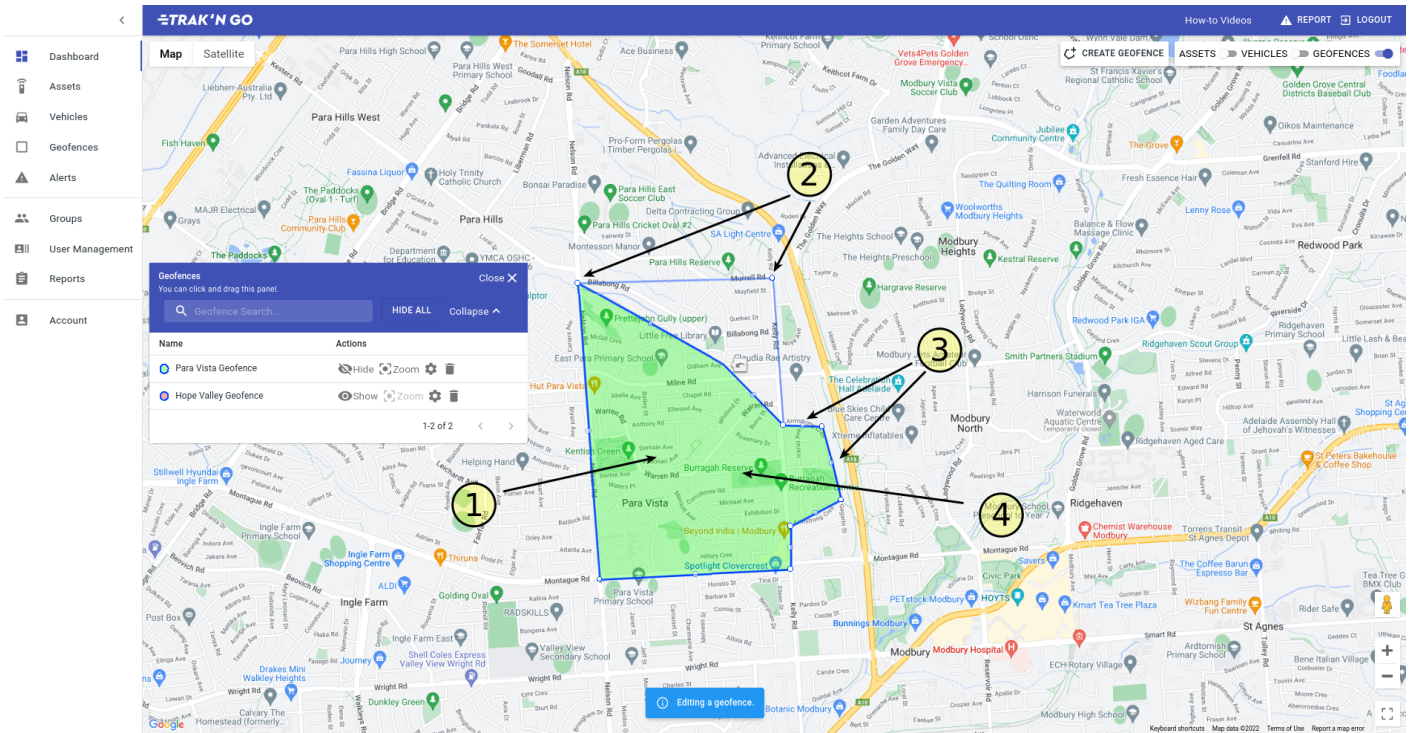
How to view a geofence on the map?



1. Make sure you are on the dashboard page.
2. On the top right of the screen, make sure the toggle for GEOFENCES is on.
3. You will see a geofence panel, that you can open by clicking the Expand button.
4. Click 'Show' Button for the geofence that you want to view on the map.
5. It will appear on the map.

How to edit a geofence?

Follow this guide to view the geofence first - [How to view a geofence on the map?](#)



1. Click in the middle on the geofence. This will start the editing process.
2. You can click and drag on these points to change their position.
3. The points in the middle of an edge will allow you to create new points.
4. Once you are done editing, click back inside the geofence to save your changes.

How to view an asset on the map?